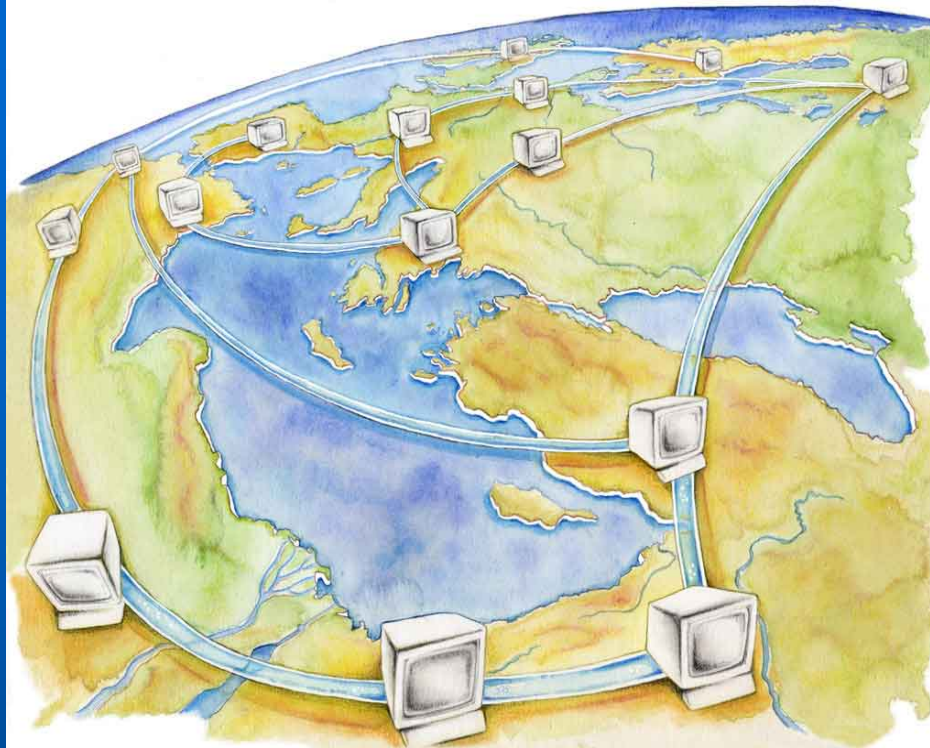




SEMIDE

www.semide.net

Système Euro-
Méditerranéen
d'information sur les
savoir-faire dans le
domaine de l'Eau



EMWIS

www.emwis.net

Euro-Mediterranean
Information System
on know how in the
water sector

النظام المعلوماتي الأورو متوسطي
للمعرفة في مجال المياه

**Collaborative platform for
Mediterranean Sustainable Cities**

Eric MINO
e.mino@semide.org





Sommaire

- EMWIS brief introduction
- Overall approach
- Survey on needs and good practices
- Web platform
 - Good practices exchange: a few examples
 - Support for launching urban cooperation projects

EMWIS in a nutshell



- Institutional network of national water authorities of Euromed countries,
- Focus on Inland water sector and its linkages with other sectors
- 22 National focal points,
- Technical Unit, Sophia Antipolis, France
- 16 Years' experience,
- Wide network among the water community,
- Support for dissemination, exchanges and cooperation,
- Interface with international organisations: e.g. EEA, UfM, UN-Water, etc.





Cooperation on Mediterranean Sustainable Cities

■ Joint activity

- ❑ OIEau / EMWIS / Euromed Cities Network
- ❑ First focus on urban water management in the context of Climate Change
- ❑ Favourable environment:
 - Euromed Cities Network
 - UN-COP22 on Climate Change
 - Urban Agenda of the Union for the Mediterranean

■ Support from NCA metropole

- ❑ Need analysis
- ❑ Preliminary web platform for collaboration
- ❑ Example of multimedia case study on waste water management
- ❑ Initiating joint projects

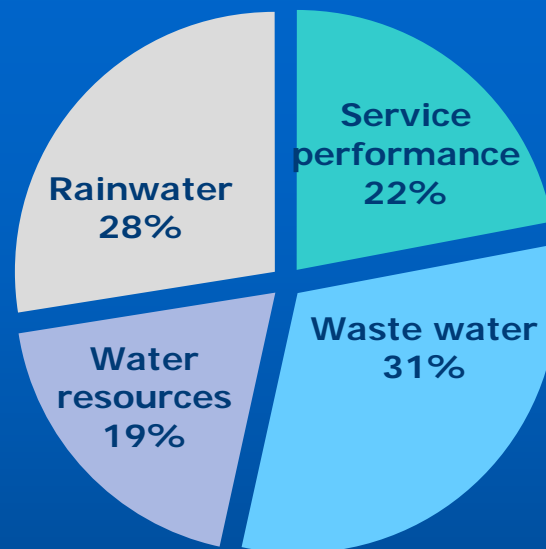


Overview Survey results

■ Good practices

Other topics:

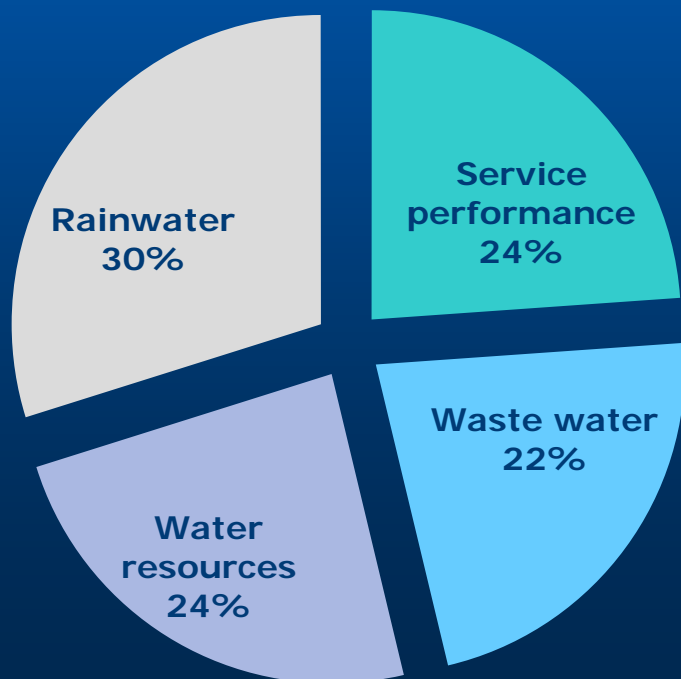
- Solid Waste
- Energy efficiency



■ Needs

Other topics:

- Solid Waste, compost
- Solar Energy
- Green areas



Web platform



HOME

ABOUT

TOPICS ▾

CONTACT

NEWS

EVENTS

LINKS



LOGIN

English

Français

Arabic

Sustainable Cities

Exchange of experiences

<http://cities.semide.net>

<http://villes.semide.net>

This web site aims at supporting the exchange of good practices between sustainable mediterranean cities based on multimedia support and at launching new joint projects

LEARN MORE >



Le schéma directeur d'assainissement et de gestion des eaux pluviales

from UT-SEMIDE

Le schéma directeur
d'assainissement
et de gestion des eaux pluviales

06:36



06:36



HD vimeo

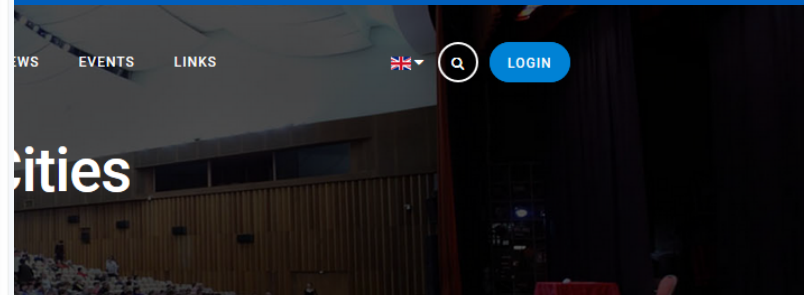
Good practices repository

Réduction des pertes techniques dans les réseaux

Alger

Algérie

Distribution d'eau potable et réduction des pertes dans les réseaux à Alger ,



Planning tools (Sewage and waste water Master Plan)



Qalqilia

Palestine

[Diagnostic study for water and wastewater networks,](#)

The objective of this study is to enable the City Council to decide on actions to be undertaken on their water supply and sanitation networks in a coherent, effective and efficient manner...

[Read more](#)

CASE STUDY



FILTER

Water

Water

- Improving water utilities performance
- Performance indicators
- Training
- Commercial Management
- Organization of the utilizes and Human Resources Management
- Rainwater management
- Planning tools (Master Plan)
- Alternative technologies for rainwater infiltration
- Alternative technologies for rainwater retention
- Bathing Water quality monitoring (linked to rainwater management)
- Waste water Collection and treatment
- Energy efficiency
- Reuse of treated wastewater
- Sludge treatment process and disposal
- Water treatment systems
- Management of industrial effluents

CALENDAR

OCTOBER 2016						
Mon	Tue	Wed	Thu	Fri	Sat	Sun
					1	2
3	4	5	6	7	8	9
10	11	12	13	14	15	16

TOPICS

Water

Waste

NEWSLETTER

Name

E-mail

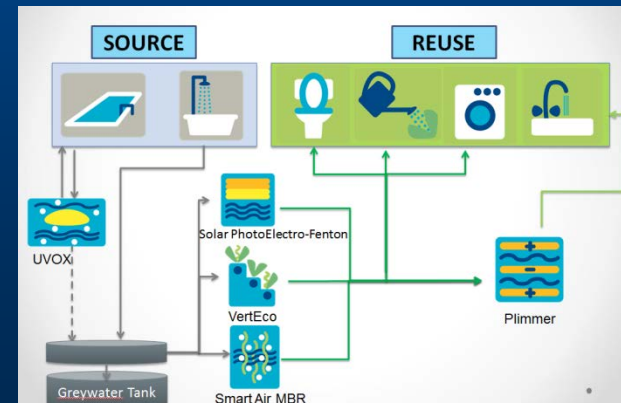
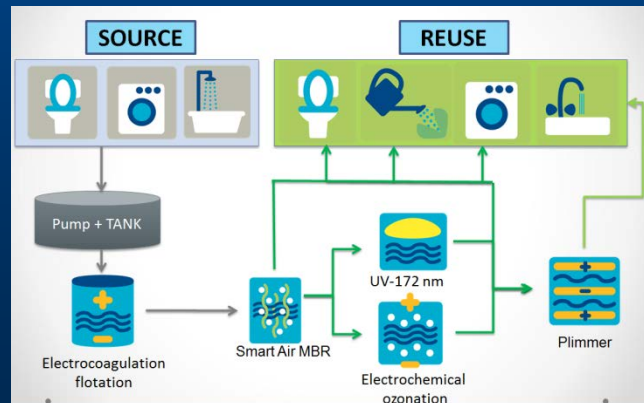
SUBSCRIBE

Don't forget follow us via:



Reuse in Touristic areas

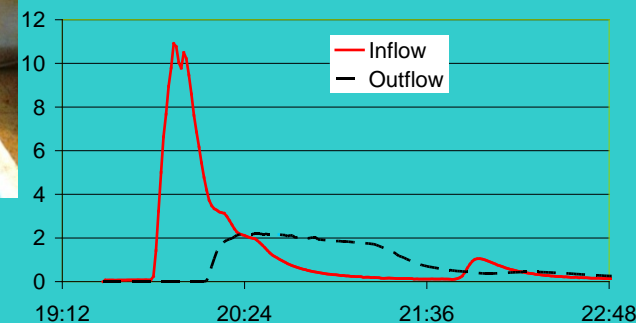
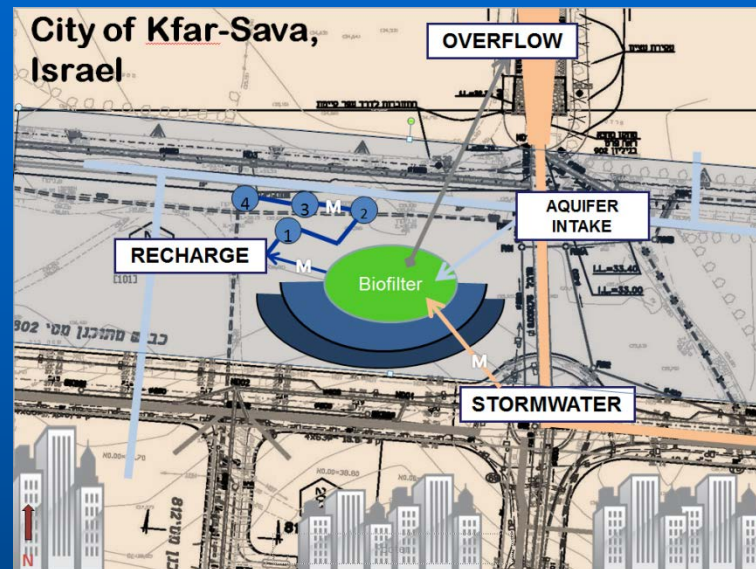
- **Lloret del Mar (ES)**
 - 40 000 inhab. winter
 - 1 500 000 during summer
 - Reuse technologies in hotel
 - 30% wastewater can be reused
 - **At city level:**
 - 3000 m³/day ~ 5000 tourist



Natural Based Solution

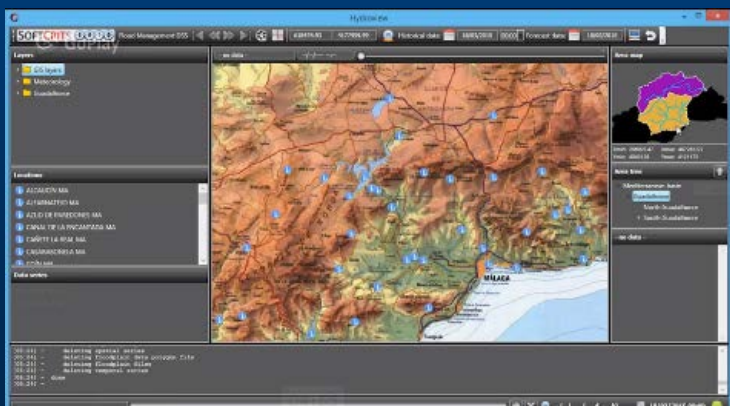
■ Kfar Saba (IL)

- Urban storm water / polluted water
- Natural water retention
- Biofilters
- Aquifer recharge



- Malaga (ES)

- ❑ **Decision Support Systems**
- ❑ **Robust low energy sensors network**
- ❑ **Smart management of dams infrastructure:**
 - Flood regulation
 - Water quality
 - Energy generation





Funding opportunities

Nombre d'annonces 2

HOME ABOUT TOPICS CONTACT NEWS EVENTS LINKS PRIVATE AREA LOG OUT

Israël, Palestine, Tunisie, Turquie, France, Italie, Chypre, Espagne, Grèce, Malte, Portugal, Maroc, Algérie

READ MORE ...

The Urban Lab of Europe (UIA) Call for Proposals

IA Innovation Action European Regional Development Fund

Model:	Three-stages	Deadline:	March 2017
Opening date:	Mid-November 2016		

READ MORE ...

Coopération Internationale Agence de l'Eau Rhône Méditerranée, Corse

Loi Oudin-Santini (2005) jusqu'à 1% des recettes de l'agence de l'eau - Budget: 4 MEuros (2015)

Dates limites	Propositions traitées au fil de l'eau	Zone prioritaires	Pays méditerranéens (hors EU) et balkans
Bénéficiaires:	collectivités territoriales et maîtres d'ouvrages des bassins RMC	Taux de financement	études jusqu'à 80%, travaux jusqu'à 50%

- Private area for members
- Registration:
- Regional prog.
- Bilateral funds

➔ To be enriched



Thank you for your attention

<http://cities.semide.net>

or

<http://villes.semide.net>

